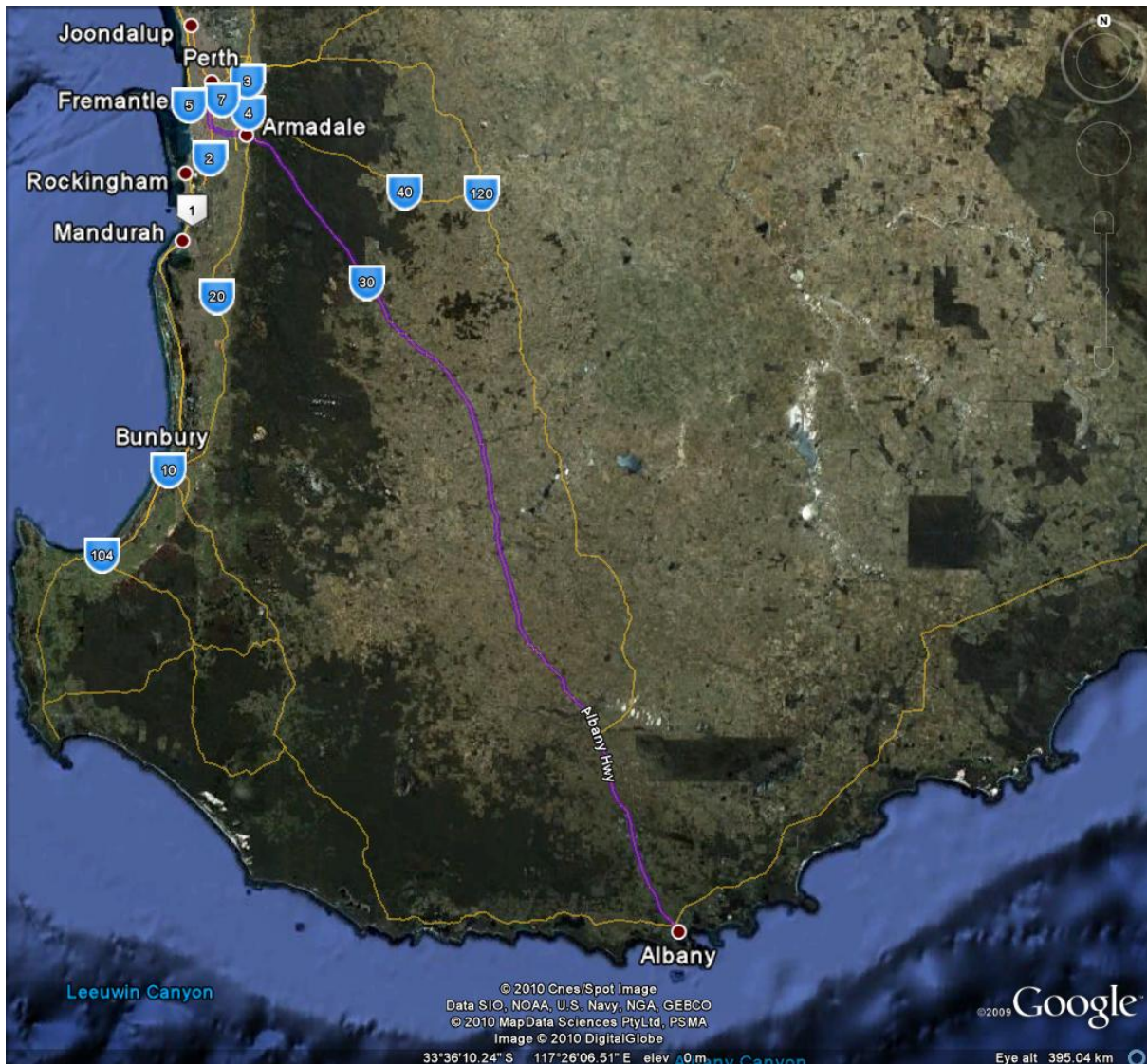


Driving directions to Albany (page 1), and

Mt Clarence Hill Climb (page 2), and

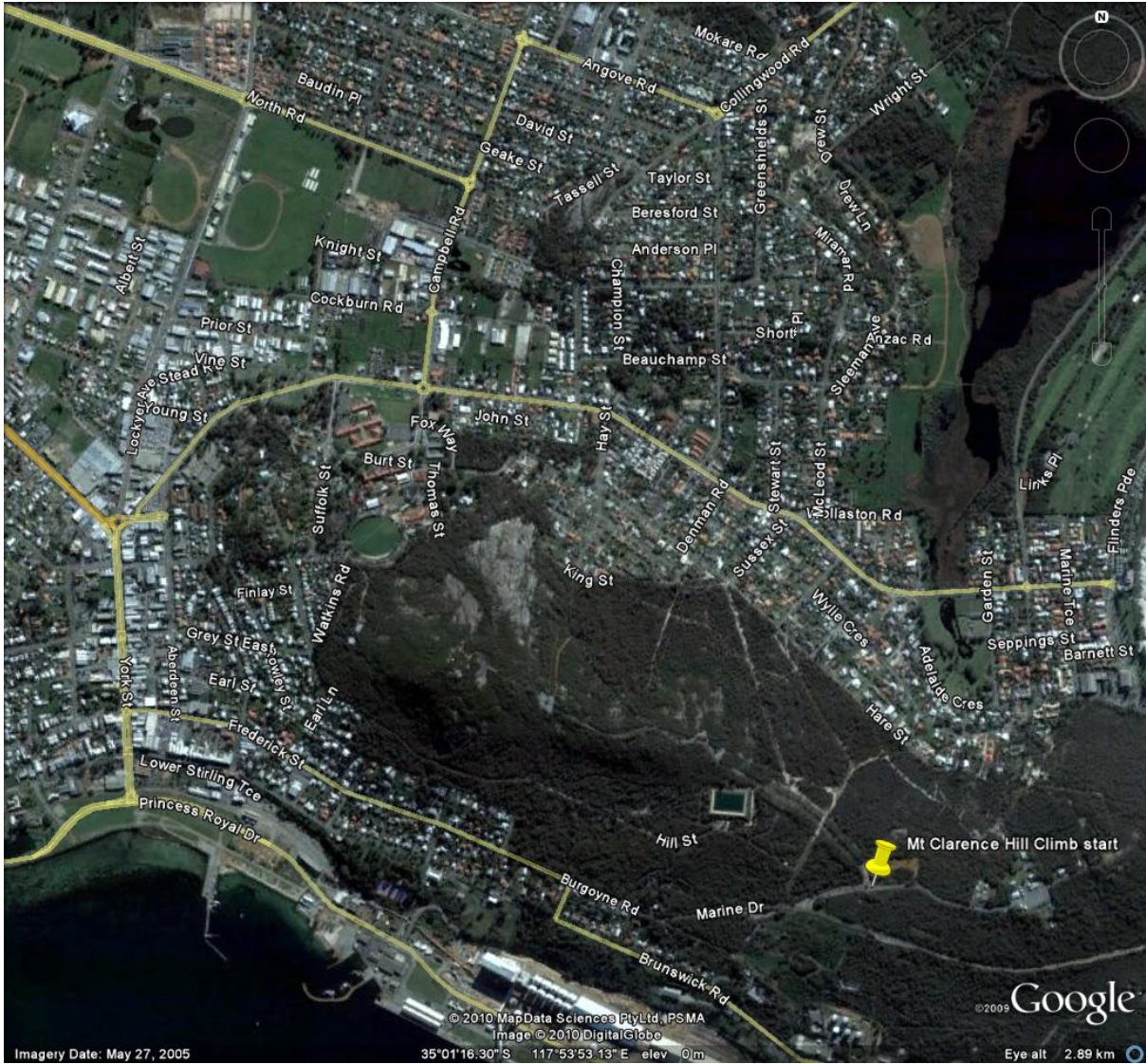
Wind Farm Hill Climb (page 3)

Navigate to the Albany Highway and continue along it until you reach Albany (about 420 km from Perth)



Mt Clarence Hill Climb

Head to the Princess Royal Fortress, off Marine Drive and enter Fort Road



Wind Farm Hill Climb

This Hill Climb is located about 10 km from Albany centre. From Frenchman Bay Road, turn left onto Princess Ave and follow the signs to the Wind Farm.

